



# Native Plants & Monarchs

## Partners in survival

### Native Plants are key to the Monarchs survival

The U.S. Fish and Wildlife Service has proposed to list the monarch butterfly (*Danaus plexippus*) as a threatened species under the U.S. Endangered Species and Native Plants can help aid in their survival.

#### How To Help

1

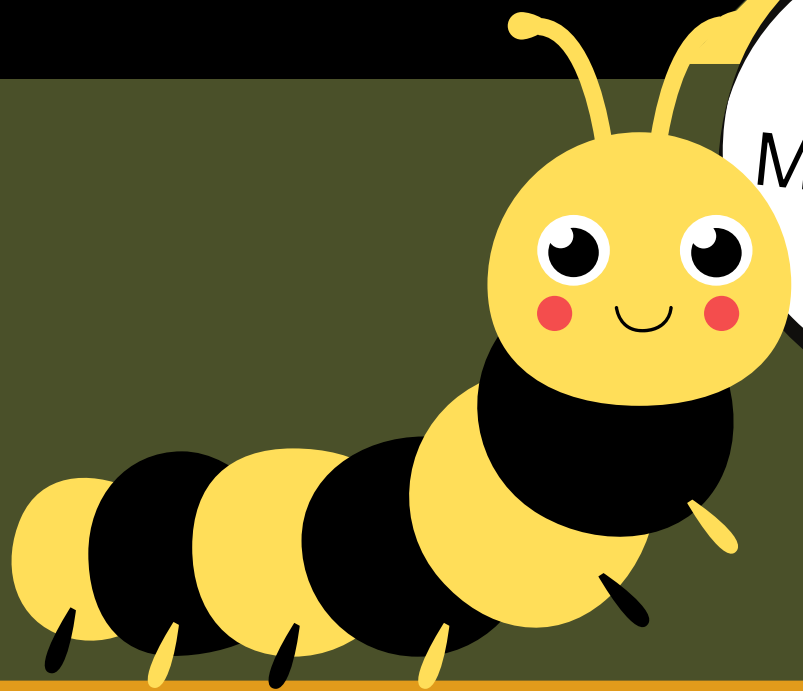
Plant Native Milkweed

2

Plant Native Nectar Plants

3

Save Habitat



I need native Milkweed to get my wings!

### Plant These Louisiana



Common Milkweed  
*Asclepias syriaca*



Swamp Milkweed  
*Asclepias incarnata*



Butterflyweed  
*Asclepias tuberosa*



Clasping Milkweed  
*Asclepias amplexicaulis*



Green Milkweed  
*Asclepias viridis* Walter



Whorled Milkweed  
*Asclepias verticillata*



White Swamp Milkweed  
*Asclepias perennis*

The toxins in the Milkweed leaves are ingested and absorbed making Monarchs less tasty to predators!



I prefer my butterflies non-toxic



CAUTION  
Say NO to  
Tropical  
Milkweed